

GAZELLE®

GB8000 Blower Vacuum User Manual



EN

Read through carefully and understand these instructions before use.

GENERAL POWER TOOL SAFETY

WARNINGS(For All Power Tools)



WARNING! Read and understand all instructions. Failure to follow all instructions listed below may result in electric shock, fire and/or serious personal injury.

Save all warnings and instructions for future reference.

The term "power tool" in the warnings refers to your mains-operated (corded) power tool or battery-operated (cordless) power tool.

This appliance is not intended for use by persons (including children) with reduced physical, sensory or mental capabilities, or lack of experience and knowledge, unless they have been given supervision or instruction concerning use of the appliance by a person responsible for their safety. Children should be supervised to ensure that they do not play with the appliance.

If the supply cord is damaged, it must be replaced by the manufacturer, its service agent or similarly qualified persons in order to avoid a hazard.

Work Area Safety

1. **Keep work area clean and well lit.** Cluttered or dark areas invite accidents.
2. **Do not operate power tools in explosive atmospheres, such as in the presence of flammable liquids, gases, or dust.** Power tools create sparks which may ignite the dust or fumes.
3. **Keep children and bystanders away while operating a power tool.** Distractions can cause you to lose control.

Electrical Safety

4. **Power tool plugs must match the outlet. Never modify the plug in anyway. Do not use any adapter plugs with earthed (grounded) power tools.** Unmodified plugs and matching outlets will reduce risk of electric shock.
5. **Avoid body contact with earthed or grounded surfaces, such as pipes, radiators, ranges and refrigerators.** There is an increased risk of electric shock if your body is earthed or grounded.
6. **Do not expose power tools to rain or wet conditions.** Water entering a power tool will increase the risk of electric shock.
7. **Do not abuse the cord. Never use the cord for carrying, pulling or unplugging the power tool. Keep cord away from heat, oil, sharp edges or moving parts.** Damaged or entangled cords increase the risk of electric shock.
8. **When operating a power tool outdoors, use an**

extension cord suitable for outdoor use. Use of a cord suitable for outdoor use reduces the risk of electric shock.

9. **If operating a power in a damp location is unavoidable, use a residual current device (RCD) protected supply.** Use of an RCD reduces the risk of electric shock.

Personal Safety

10. **Stay alert, watch what you are doing and use common sense when operating a power tool. Do not use a power tool while you are tired or under the influence of drugs, alcohol, or medication.** A moment of inattention while operating power tools may result in serious personal injury.
11. **Use personal protective equipment. Always wear eye protection.** Protective equipment such as dust mask, non-skid safety shoes, hard hat, or hearing protection used for appropriate conditions will reduce personal injuries.
12. **Prevent unintentional starting. Ensure the switch is in the off-position before connecting to power source and /or battery pack, picking up or carrying the tool.** Carrying power tools with your finger on the switch or energising power tools that have the switch on invites accidents.
13. **Remove any adjusting key or wrench before turning the tool on.** A wrench or a key left attached to a rotating part of the power tool may result in personal injury.
14. **Do not overreach. Keep proper footing and balance at all times.** This enables better control of the power tool in unexpected situations.
15. **Dress properly. Do not wear loose clothing or jewellery. Keep your hair, clothing, and gloves away from moving parts.** Loose clothes, jewellery or long hair can be caught in moving parts.
16. **If devices are provided for the connection of dust extraction and collection facilities, ensure these are connected and properly used.** Use of dust collection can reduce dust-related hazards.

Power Tool Use and Care

17. **Do not force the power tool. Use the correct power tool for your application.** The correct power tool will do the job better and safer at the rate for which it was designed.
18. **Do not use tool if switch does not turn it on or off.** Any power tool that cannot be controlled with the switch is dangerous and must be repaired.
19. **Disconnect the plug from the power source and/or the battery pack from the power tool before making any adjustments, changing accessories, or storing power tools.** Such preventive safety measures reduce the risk of starting the power tool accidentally.

20. **Store idle power tools out of the reach of children and do not allow persons unfamiliar with the power tool or these instructions to operate the power tool.** *Power tools are dangerous in the hands of untrained users.*
21. **Maintain power tools. Check for misalignment or binding of moving parts, breakage of parts and any other condition that may affect the power tool's operation. If damaged, have the power tool repaired before use.** *Many accidents are caused by poorly maintained power tools.*
22. **Keep cutting tools sharp and clean.** *Properly maintained cutting tools with sharp cutting edges are less likely to bind and are easier to control.*
23. **Use the power tool, accessories and tool bits etc. in accordance with these instructions, taking into account the working conditions and the work to be performed.** *Use of the power tool for operations different from those intended could result in a hazardous situation.*

Service

24. **Have your power tool serviced by a qualified repair person using only identical replacement parts.** *This will ensure that the safety of the power tool is maintained.*

1) Training

- Read the instructions carefully. Be familiar with the controls and the proper use of the appliance.
- Never allow children to use the appliance.
- Never allow people unfamiliar with these instructions to use the appliance. Local regulations may restrict the age of the operator.
- Never operate the appliance while people, especially children, or pets are nearby.
- The operator or user is responsible for accidents or hazards occurring to other people or their property.

2) Preparation

- While operating the appliance, always wear substantial footwear and long trousers.
- Do not wear loose clothing or jewellery that can be drawn into the air inlet. Keep long hair away from the air inlets.
- Wear protective goggles while operating
- To prevent dust irritation the wearing of a face mask is recommended
- Before using, check the supply and extension cord for signs of damage and aging. Do not use the appliance if the cord is damaged or worn.
- Never operate the appliance with defective guards or shields, or without safety devices, for example debris collector in place.
- Only use a weather proof extension cable fitted with a coupler according to

IEC 60320-2-3.

3) Operation

- Always direct the cable to the rear away from the appliance.
- If a cord becomes damaged during use, disconnect the supply cord from the mains immediately. **DO NOT TOUCH THE CORD BEFORE DISCONNECTING THE SUPPLY.**
- Do not carry the appliance by the cable.
- Disconnect the appliance from the mains supply
 - whenever you leave the machine;
 - before clearing a blockage;
 - before checking, cleaning or working on the appliance;
 - if the appliance starts to vibrate abnormally.
- Operate the appliance only in daylight or in good artificial light.
- Do not overreach and keep your balance at all times.
- Always be sure of your footing on slopes.
- Walk, never run.
- Keep all cooling air inlets clear of debris.
- Never blow debris in the direction of bystanders.

4) Maintenance and storage

- Keep all nuts, bolts and screws tight to be sure the appliance is in safe working condition.
- Check the debris collector frequently for wear or deterioration.
- Replace worn or damaged parts.
- Use only genuine replacement parts and accessories
- Store the appliance only in a dry place.

VOLTAGE WARNING:

Before connecting the machine to a power source (receptacle, outlet, etc.), be sure the voltage supplied is the same as that specified on the nameplate of the machine. A power source with voltage greater than that specified for the machine can result in **SERIOUS INJURY** to the user, as well as damage to the machine. If in doubt, **DO NOT PLUG IN THE MACHINE.** Using a power source with voltage less than nameplate rating is harmful to the motor.

ADDITIONAL SAFETY RULES

1. Always be sure that the tool is switched off before plugging in.
2. Clothing must be sturdy and snug-fitting, but allow complete freedom of movement. Avoid loose-fitting jackets, flared or cuffed pants, scarfs, unconfined long hair or anything that could be drawn into the air intake. Wear overalls or long pants to protect

your legs. Do not wear shorts.

3. Proper eye protection is a must. Never operate a blower unless wearing goggles or properly fitted safety glasses with adequate top and side protection.
4. It is recommended to wear a protecting mask to avoid being irritated by the dust.
5. Always inspect cord (including extension cord) and plug before using the tool. Do not use the tool if damage or aging be found. Only have damage repaired by qualified repair personnel.
6. Only use the tool in the daytime or under well-lighted circumstances.
7. Never overreach. Always keep balance at all times. Be sure to have a firm footing when working on a slope.
8. Keep all cooling air inlets free.
9. Never work without a dust bag.
10. Do not direct air blast towards bystanders or animals, since the high pressure of the air flow could injure eyes and could blow small objects at great speed.
11. Do not put your hands or face near the blower opening during operation.
12. Never vacuum hot materials (e.g. ashes, metal shavings), damp material or fluids, screws, material with sharp edges (glass splinters) and the like.
13. Work under moisture circumstances may cause a risk of electric shock. Do not expose the tool in the rain, store only indoors.
14. Never block the air inlet/outlet.
15. Do not let untrained person or weakling to use the tool.
16. Do not leave the tool unattended; children are not allowed to use or play with the tool.

SAVE THESE INSTRUCTIONS.

WARNING! MISUSE or failure to follow the safety rules stated in this instruction manual may cause serious personal injury.

UK power plug warnings:

Your product is fitted with an BS 1363-1 approved electric plug with internal fuse approved to BS 1362. If the plug is not suitable for your socket, it should be removed and an appropriate plug should be fitted in its place by an authorized customer service agent. The replacement plug should have the same fuse rating as the original plug.

The severed plug must be disposed of to avoid a possible shock hazard and should never be inserted into a mains socket elsewhere.

Symbol



Warning



Switch off and unplug before cleaning or maintenance



To reduce the risk of injury, user must read instruction manual



Not be used in rain or left outdoor when raining



Wear protective glasses



Make bystanders away

Technical data

Model	GB8000
Rated Power Input	680 W
No-Load Speed	8300-16300 /min
Air Volume	1.6-3.2 m ³ /min
Net Weight	1.8kg

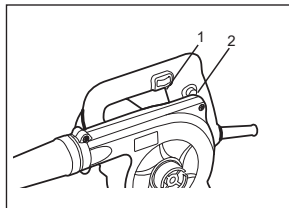
※ Due to the continuing program of research and development, the specifications herein are subject to change without prior notice.

INSTRUCTIONS FOR OPERATION

Switch Operation

To start the tool, simply press the switch button. Release the button to stop. For continuous operation, press the button and then push in the lock-on button. To stop the tool from the locked position, pull the trigger fully then release it.

CAUTION: Before plugging in the tool, always check to see that the switch actuates properly and returns to the "OFF" position when released.

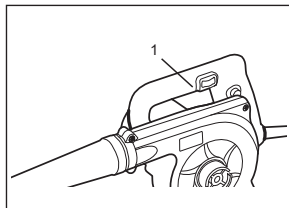


- 1.Switch
- 2.Lock-on Button

Speed Controller (DQF25/AQF25/KQF25)

The speed of tool can be adjusted from 8300r/min to 16300r/min by turning the knob of speed controller while the tool is being operated, and the volume of gas in and out can be adjusted among 1.6m³/min and 3.2m³/min to meet different working needs. There are 6 levels on the speed controller marked by the number from 1-6. No.1 means the lowest speed and No.6 is the highest.

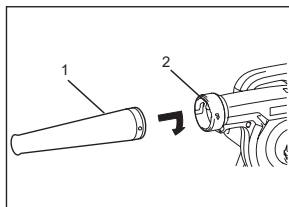
Caution: The speed controller knob can be turned from No.1 to No.6. Any place beyond these numbers may cause the damage of the controller.



- 1.Speed Controller Knob

Blowing

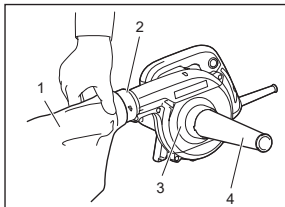
Stick the nozzle onto the air outlet and fasten by turning clockwise. Start the tool to blow off the dust.



- 1.Nozzle
- 2.Air Outlet

Vacuuming

For vacuuming operation, stick the nozzle on the air inlet, and install the dust bag on the air outlet.

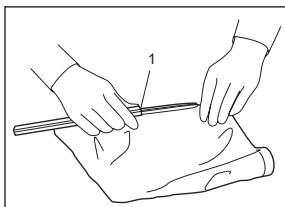


- 1.Dust Bag
- 2.Air Outlet
- 3.Air Inlet
- 4.Nozzle

Dust Bag

Empty the dust bag at regular intervals by removing the clamping strip.

Caution: Always wear goggles and protecting mask to avoid being irritated by the dust.



- 1.Clamping Strip

Maintenance and Care

Always be sure that the machine is switched off and unplugged before attempting to perform maintenance.

• Clean the air vents

The air inlet and air outlet of the tool should be cleaned regularly or at any time when it is blocked.

• Check the mounting screws

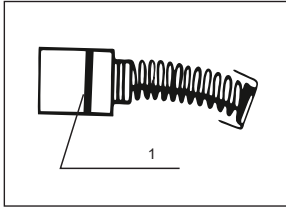
Should always check whether mounting screw fastening safely. If found loose screws, shall be immediately to tighten, so as to avoid an accident.

• After use

Do not put down the tool immediately after operation. Put down the tool only when it comes to a completely stop to avoid any risk and reduce much of dust and particles to be sucked into the tool.

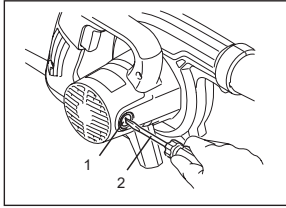
• Replacing Carbon Brushes

Remove and check the carbon brushes regularly. Replace when they wear down to the limit mark. Keep the carbon brushes clean and free to slip in the holders. Both carbon brushes should be replaced at the same time.



1.Limit Mark

Use a screwdriver to remove the brush holder caps.
Take out the worn carbon brushes insert the new ones
and secure the brush holder caps.



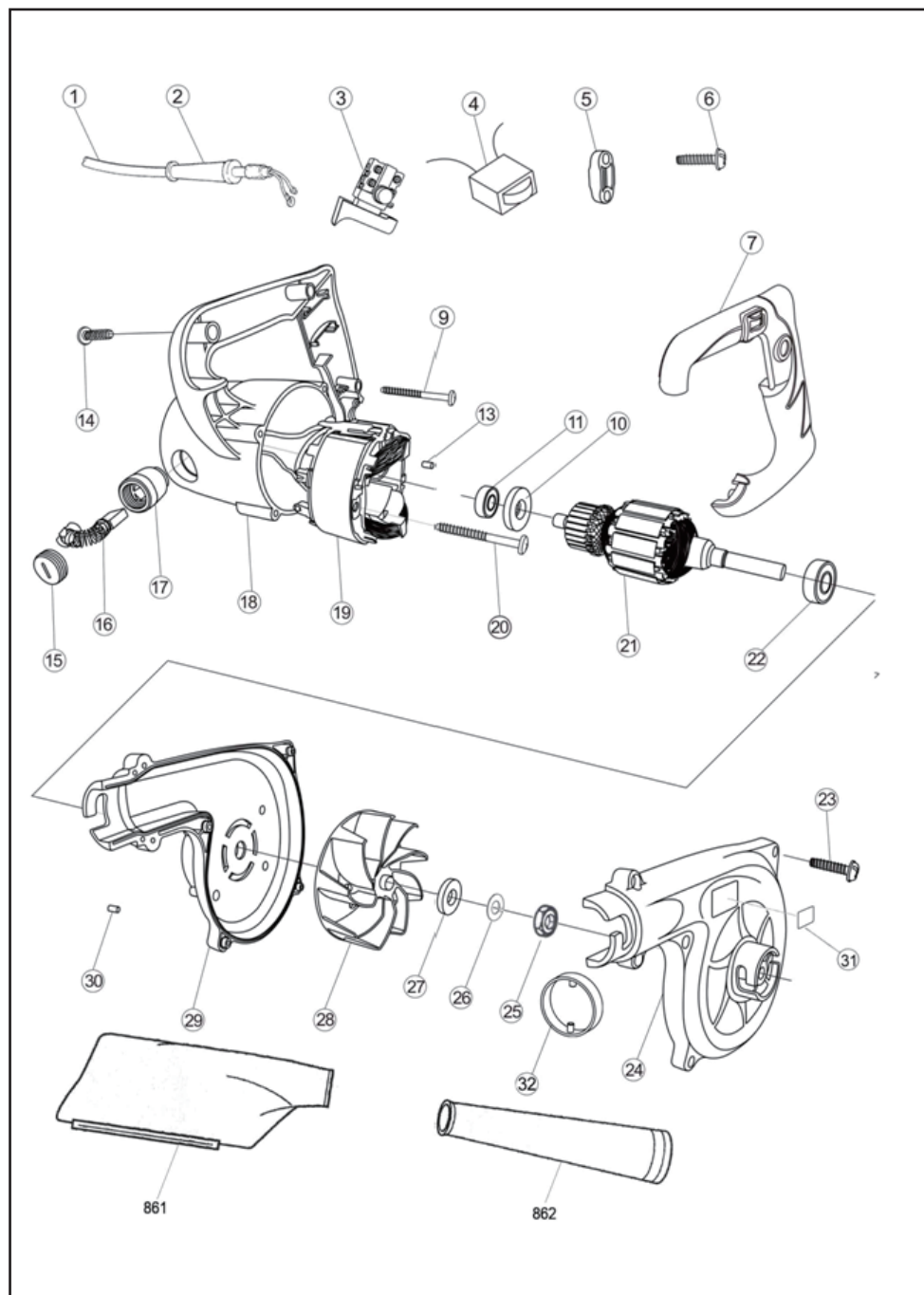
1.Brush Holder
Cap
2.Screwdriver

• Maintenance of the Motor

The motor unit winding is the very "heart" of the power tool. Exercise due care to ensure the winding does not become damaged and /or wet with oil or water.

EXPLANATION OF GENERAL VIEW

1	Cord	20	Pan Head Tapping Screw ST5×40
2	Cord Guard	21	Armature Ass'y
3	Switch	22	Ball Bearing 629VV
4	Speed Controller	23	Pan Head Tapping Screw ST4.2×17
5	Strain Relief	24	Fan Housing Cover
6	Pan Head Tapping Screw ST4.2×17	25	Hex Nut M5
7	Handle Cover	26	Spring Washer 5
9	Pan Head Tapping Screw ST4×37	27	Flat Washer A5
10	Insulation Washer	28	Fan
11	Ball Bearing 608SS	29	Fan Housing Base
13	Rubber Pin (4.5×8)	30	Rubber Pin (4.5×8)
14	Pan Head Tapping Screw ST4.2×17	31	Nameplate
15	Brush Holder Cap	32	Sleeve
16	Carbon Brush	861	Dust Bag Assembly
17	Carbon Brush Holder Ass'y	862	Blowpipe Assembly
18	Motor Housing	863	Fan Housing Cover and Base
19	Stator Ass'y		



INNOVATION
PERFORMANCE
SAFETY
CONFIDENCE
GAZELLE

GAZELLE

sales@gazelleindustrial.com | www.gazelleindustrial.com